



THE LAB EQUIPMENT

Email : sales@thelabequipment.com

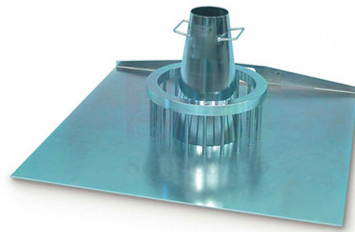
Phone: +91-8759245890

Product Name :

J Ring Apparatus

Product Code :

SLE/CE/14



Description :

- The J-Ring test is used for determining the passing ability, the flow spread and the flow time of self compacting concrete as the concrete flows through the JRing apparatus.
- The J-Ring narrow gap with $\varnothing 18$ mm x 16 smooth bars is manufactured from stainless steel.
- The Base plate is 900x900x3 mm square, made of stainless steel with engraved circles of 200 mm and 500 mm diameter.
- The Slump Cone is made from sheet steel protected against corrosion, with diameters; top 100 mm, base 200 mm and with a height of 300 mm.
- The Steel weighted collar is used to stabilize the slump cone on J-Ring or slump flow tests.
- Minimum apparatus for the J-Ring test are J-Ring with narrow gap and slump cone.

Contact Science Lab for your Educational School Science Lab Equipments. We are best scientific lab equipments manufacturers, scientific laboratory equipments manufacturer, technical educational equipment manufacturer, technical lab equipments manufacturers, tvet lab equipment manufacturers, vocational training lab equipments exporter.

Website: <https://www.thelabequipment.com>, **Email:** sales@thelabequipment.com

plot. no.296. Sector 5. Vaishali. Ghaziabad. Uttar Pradesh 201010