



THE LAB EQUIPMENT

Email : sales@thelabequipment.com

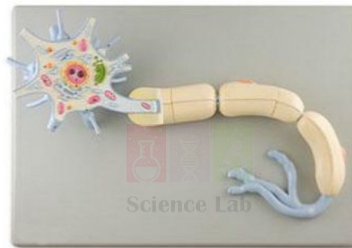
Phone: +91-8759245890

Product Name :

Neuron Model

Product Code :

SLE/A/147



Description :

About 2,500x life size.

Includes numbered key.

Size: 53 x 38 x 17 cm.

Mounted on a durable polymer base.

Detailed anatomical structures of a typical myelinated neuron are shown, including the cell body with nucleus and nucleolus; dendrites and axon; Golgi complex; mitochondria; endoplasmic reticulum; and myelin sheath with nodes of Ranvier and Schwann cells. Remove a portion of the myelin sheath to view the interior of the axon.

Contact Science Lab for your Educational School Science Lab Equipments. We are best scientific lab equipments manufacturers, scientific laboratory equipments manufacturer, technical educational equipment manufacturer, technical lab equipments manufacturers, tvet lab equipment manufacturers, vocational training lab equipments exporter.

Website: <https://www.thelabequipment.com>, **Email:** sales@thelabequipment.com

plot. no.296. Sector 5. Vaishali. Ghaziabad. Uttar Pradesh 201010