



THE LAB EQUIPMENT

Email : sales@thelabequipment.com

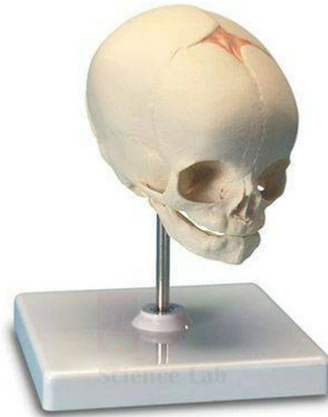
Phone: +91-8759245890

Product Name :

Fetal Skull

Product Code :

SLE/A/126



Description :

Moveable spring-held jaw.

Rod-mounted on a durable polymer base.

Skull detaches from stand for examination.

Size (without stand), 11 x 11 x 20 cm.

Contact Science Lab for your Educational School Science Lab Equipments. We are best educational lab equipments exporter, educational lab equipments manufacturers, educational lab equipments supplier, educational lab equipments suppliers, educational lab export, educational lab exporter.

Website: <https://www.thelabequipment.com>, **Email:** sales@thelabequipment.com

plot. no.296. Sector 5. Vaishali. Ghaziabad. Uttar Pradesh 201010