



THE LAB EQUIPMENT

Email : sales@thelabequipment.com

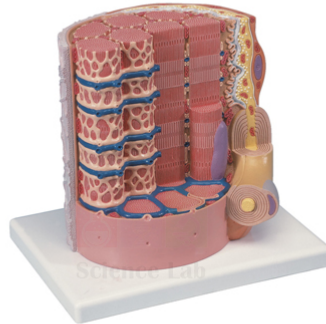
Phone: +91-8759245890

Product Name :

Skeletal Muscle Fiber Model

Product Code :

SLE/A/95



Description :

10,000x life size.

Size, 25 x 23 x 23 cm.

Mounted on reinforced polymer base.

Microstructure of a skeletal muscle fiber is represented in great detail.

Includes the neuromuscular junction, sarcoplasmic reticulum, T tubules, and myofibrils.

Contact Science Lab for your Educational School Science Lab Equipments. We are best technical educational instruments supplier, technical institute lab equipments, technical lab equipments manufacturers, top lab equipments manufacturers, tvet lab equipment manufactruers, vocational training lab equipments exporter, vocational training lab equipments manufacturers.

Website: <https://www.thelabequipment.com>, **Email:** sales@thelabequipment.com

plot. no.296. Sector 5. Vaishali. Ghaziabad. Uttar Pradesh 201010