



THE LAB EQUIPMENT

Email : [sales@thelabequipment.com](mailto:sales@thelabequipment.com)

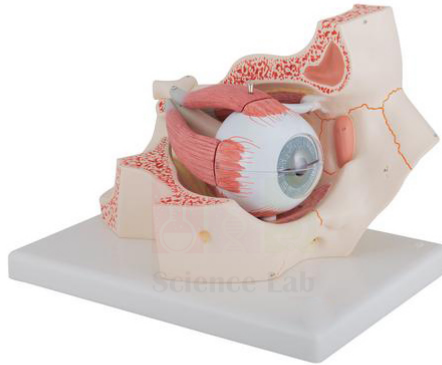
Phone: +91-8759245890

**Product Name :**

Human Eye in Orbit Model

**Product Code :**

SLE/A/81



## Description :

3x life size.

The eye can be dissected into 7 pieces.

Removable parts include the 2-part sclera with cornea and eye muscle attachments, 2-part choroid with iris and retina, lens, and the vitreous humor.

This large anatomical human eye model shows the optic nerve in its natural position in the bony orbit of the eye (floor and medial wall).

Contact Science Lab for your Educational School Science Lab Equipments. We are best science educational equipments, science educational instruments, science lab equipments manufacturer, science laboratory instruments exporter, scientific educational equipments, scientific educational lab equipment.

**Website:** <https://www.thelabequipment.com>, **Email:** [sales@thelabequipment.com](mailto:sales@thelabequipment.com)

plot. no.296. Sector 5. Vaishali. Ghaziabad. Uttar Pradesh 201010