



THE LAB EQUIPMENT

Email : [sales@thelabequipment.com](mailto:sales@thelabequipment.com)

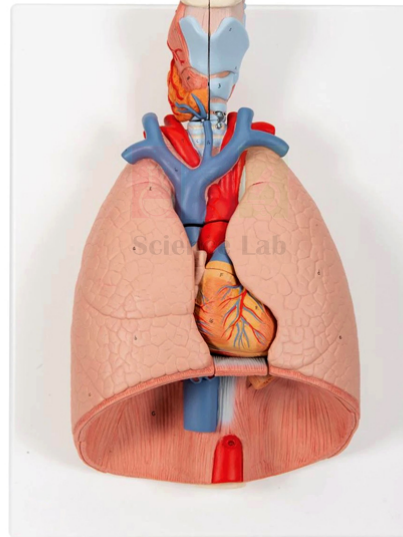
Phone: +91-8759245890

**Product Name :**

Human Thoracic Organs Model

**Product Code :**

SLE/BL/98



### **Description :**

Mounted on a base, appropriately colored and numbered with key card. Shows thoracic organs include two part larynx, two part of heart, trachea and bronchial tree, subclavian artery and vein, vena cava aorta, pulmonary artery, esophagus and diaphragm, two front half lungs are removable. Custom-made anatomical models available for bulk quantity.