



THE LAB EQUIPMENT

Email : [sales@thelabequipment.com](mailto:sales@thelabequipment.com)

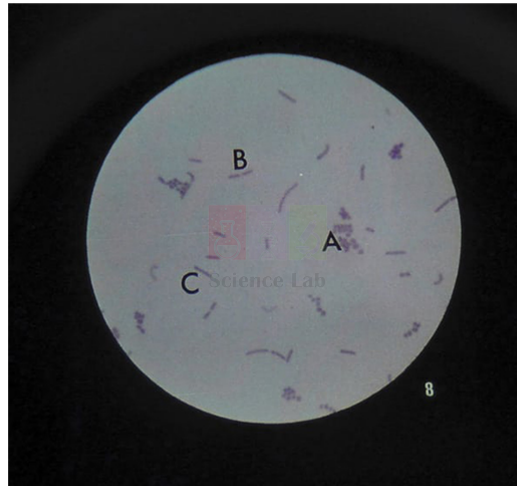
Phone: +91-8759245890

**Product Name :**

Microslide Cells Of Plants

**Product Code :**

SLE/PS/84



## Description :

Microslides are sets of 8 related 35mm images as photographed through a microscope to be viewed through a Microslide Viewer.

Arrows and callouts help the students locate important features being studied.

Onion skin cells, Green cells of a leaf, Cells of a woody stem (100x), Cells of a woody stem (40x), Cells of the anther, Cells of the lily ovary, Spirogyra cell, Bacteria.

Accompanied by a detailed text folder designed to stimulate, inform and question the students about the topic.

Each text folder has a handy pocket to store the Microslides.

Contact Science Lab for your Educational School Science Lab Equipments. We are best scientific laboratory equipments manufacturer, scientific laboratory equipments supplier, technical educational equipment exporter, technical educational equipment manufacturer, technical educational equipment supplier, technical educational equipments exporter.

**Website:** <https://www.thelabequipment.com>, **Email:** [sales@thelabequipment.com](mailto:sales@thelabequipment.com)

plot. no.296. Sector 5. Vaishali. Ghaziabad. Uttar Pradesh 201010