



THE LAB EQUIPMENT

Email : [sales@thelabequipment.com](mailto:sales@thelabequipment.com)

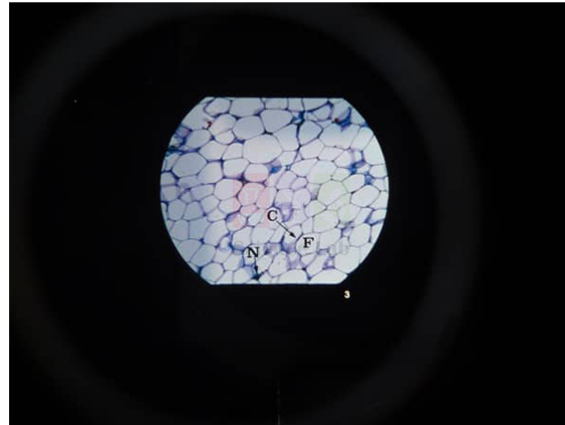
Phone: +91-8759245890

**Product Name :**

Microslide Basic Human Histology

**Product Code :**

SLE/PS/83



## Description :

Microslides are sets of 8 related 35mm images as photographed through a microscope to be viewed through a Microslide Viewer.

Each text folder has a handy pocket to store the Microslides.

Accompanied by a detailed text folder designed to stimulate, inform and question the students about the topic.

Bone XS - Stained, Cartilage, Fat Cells, Epithelial Tissue / Ciliated Epithelial Cell, Nerve Cells - Stained, Striated Muscle Cells, Red Blood Cells, White Blood Cells

Arrows and callouts help the students locate important features being studied.

Contact Science Lab for your Educational School Science Lab Equipments. We are best maths lab scientific educational lab equipments, scientific equipments manufacturers, scientific lab equipment manufacturers, scientific lab plasticware, scientific laboratory equipment manufacturer, scientific laboratory equipment supplier.

**Website:** <https://www.thelabequipment.com>, **Email:** [sales@thelabequipment.com](mailto:sales@thelabequipment.com)

plot. no.296. Sector 5. Vaishali. Ghaziabad. Uttar Pradesh 201010