



THE LAB EQUIPMENT

Email : sales@thelabequipment.com

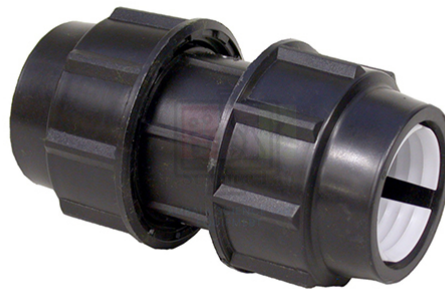
Phone: +91-8759245890

Product Name :

Coupler Reducing PP Comp, HDPE
110x90mm OD-P

Product Code :

SLE/WDF/17



Description :

Description:-

Reducing coupler made of polypropylene, compression fitting, for HDPE pipes of outside diameters 110 mm x 90 mm.

Specifications:-

Straight coupling, reducing, female x female, compression fitting, for use with HDPE pipes.

Material: Reinforced, high impact strength polypropylene (UV stabilised).

Pressure rating: 10 bar at 20°C.

Suitable temperature range: 0 to 50°C.

Outside diameters of pipes: 110 mm x 90 mm.

Approved for use with drinking water.

Contact Science Lab for your Educational School Science Lab Equipments. We are best scientific lab equipments manufacturers, scientific laboratory equipments manufacturer, technical educational equipment manufacturer, technical lab equipments manufacturers, tvet lab equipment manufacturers, vocational training lab equipments exporter