



THE LAB EQUIPMENT

Email : [sales@thelabequipment.com](mailto:sales@thelabequipment.com)

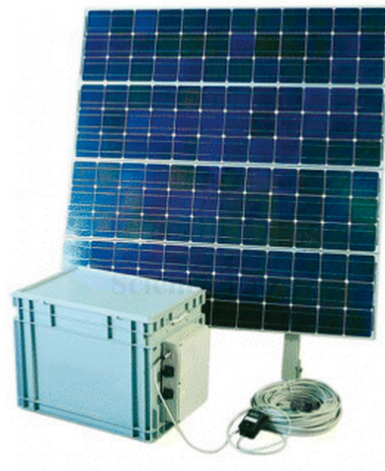
Phone: +91-8759245890

**Product Name :**

200 Wp Solar Power System, Complete

**Product Code :**

SLE/CME/03



**Website:** <https://www.thelabequipment.com>, **Email:** [sales@thelabequipment.com](mailto:sales@thelabequipment.com)

plot. no.296. Sector 5. Vaishali. Ghaziabad. Uttar Pradesh 201010



THE LAB EQUIPMENT

Email : [sales@thelabequipment.com](mailto:sales@thelabequipment.com)

Phone: +91-8759245890

## Description :

### Technical Specifications:

2 x maintenance free 12V/120-125Ah batteries

Battery box

Heavy duty metal support structure

4x50W solar electric modules

10V/10A charge controller

All required installation material (cabling, nails and plugs)

### Instruction for use:

Standard, heavy duty solar power system for permanent installations, providing direct or back-up power for typical applications like a complete radio room or a remote repeater site.

Four panels are mounted electrically in parallel and secured to the aluminum support structure. Heavy-duty cable is run from panels to the charge regulator (mounted on side of battery box). The two batteries are connected in parallel, and (internal in box) to the charge regulator. The panels should be cleaned (water/soft brush) at regular intervals to ensure maximum effect. Aluminum support must be properly grounded. Panels are installed on rooftop, or other suitable and secure location with direct view of the sun. Support structure elevation is adjusted for maximum (day-round) solar power.

### Precondition for utilisation:

Installation must be done by qualified technical staff. Incorrect installation may cause mechanical failure, electrical damage, poor performance and safety risks.

Contact Science Lab for your Educational School Science Lab Equipments. We are best mathematics lab equipments suppliers, mathematics lab kit, mathematics lab kits india, maths kits ,maths lab equipment manufacturers in india, maths lab equipment suppliers.