



THE LAB EQUIPMENT

Email : sales@thelabequipment.com

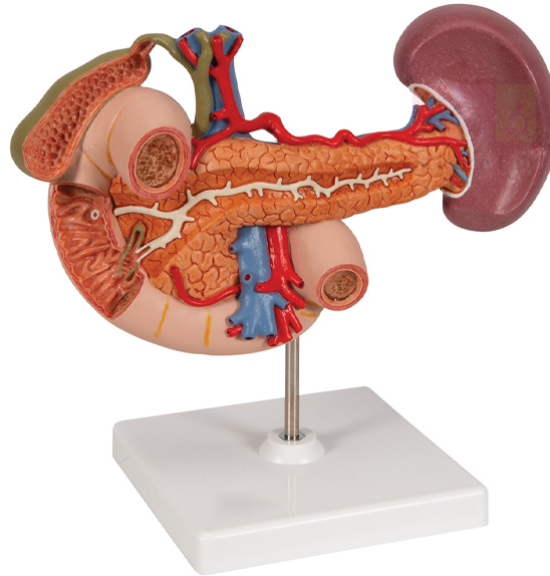
Phone: +91-8759245890

Product Name :

Rear Organs of the Upper Abdomen

Product Code :

SLE/DS/02



Description :

Science Lab Export, Model illustrates the anatomy of the rear organs of the upper abdomen with high quality craftsmanship.

The upper abdomen organ model shows the duodenum (partially opened), gall bladder (opened) and bile ducts (opened), the pancreas (revealing large ducts), the spleen and the surrounding vessels in natural size.

Contact Science Lab for your Educational School Science Lab Equipments. We are best school lab equipment suppliers, lab equipment suppliers near me, laboratory equipment manufacturers in india, scientific equipment manufacturing company, educational equipments for science labs, educational lab equipment manufacturers in india.